

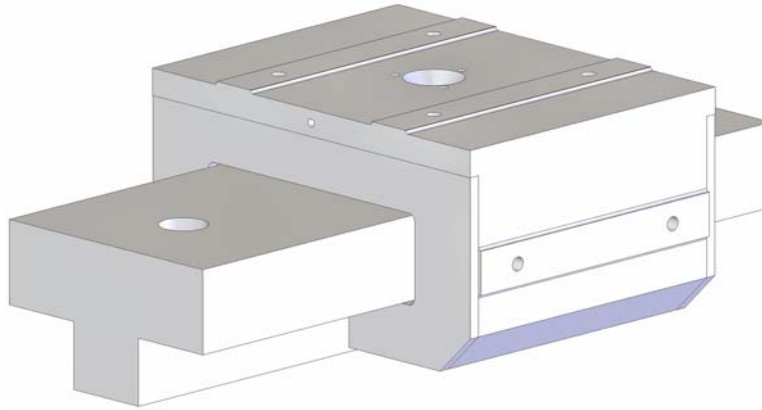


RUNNING PARALLELISM	
1. 	3 MICRONS PER METER OF RAIL LENGTH
2. 	3 MICRONS PER METER OF RAIL LENGTH



### SPECIFICATIONS

MASS (KG)	GUIDE:	5.5	PER METER LENGTH
	TRUCK:	1.3	

### PERFORMANCE

INPUT PRESSURE (KPA)	INPUT FLOW (LPM)	LOAD CAPACITY	
		RADIAL (N)	LATERAL (N)
300	1.3	470	235
400	2.1	630	315
500	3.8	780	390
600	5.2	940	470

