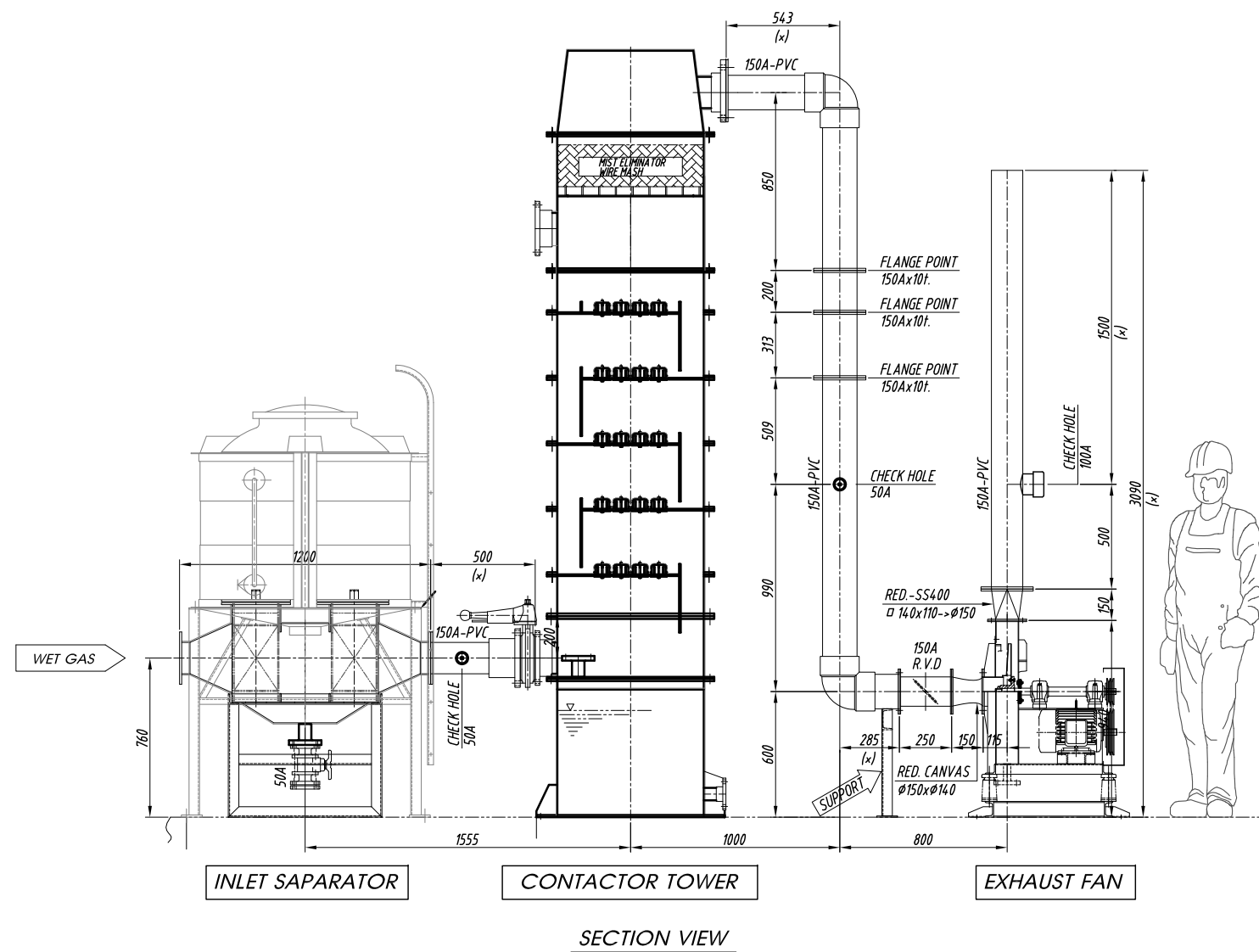
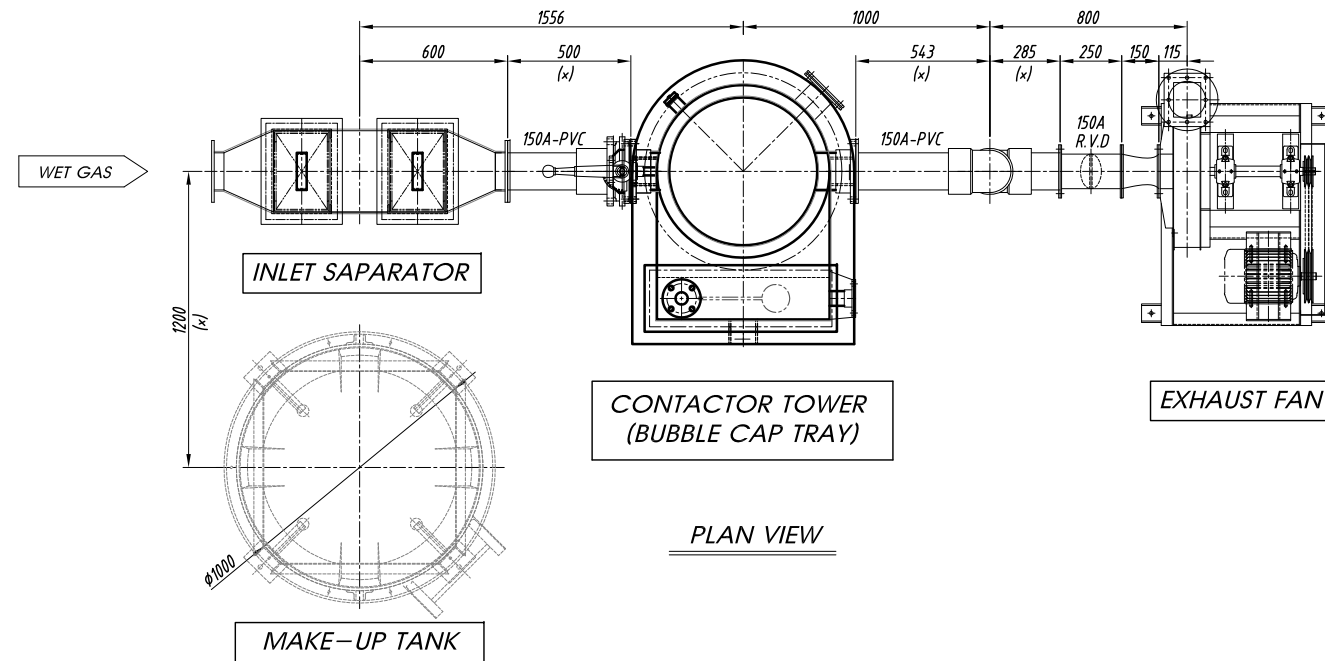



EQUIPMENT SPECIFICATION																			
CONTACTOR TOWER	ITEM NO.		-																
	NAME OF EQUIPMENT		CONTACTOR TOWER																
	QUANTITY		1 SET																
	TYPE		VERTICAL (BUBBLE CAP TRAY)																
	MATERIAL		P.P																
	CAPACITY		10 m ³ /min ³ @ 25°C																
	SIZE		ø700 x 3468H																


[ALT #1]
BUBBLE CAP TRAY



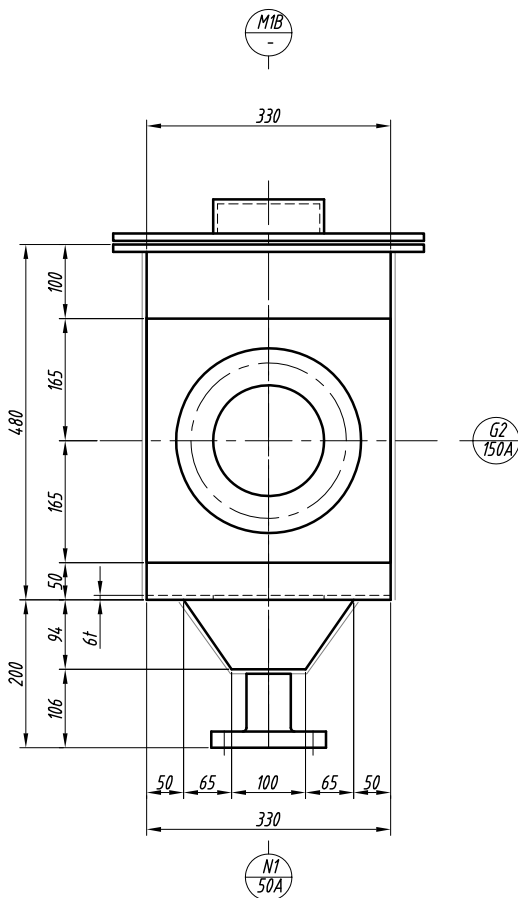
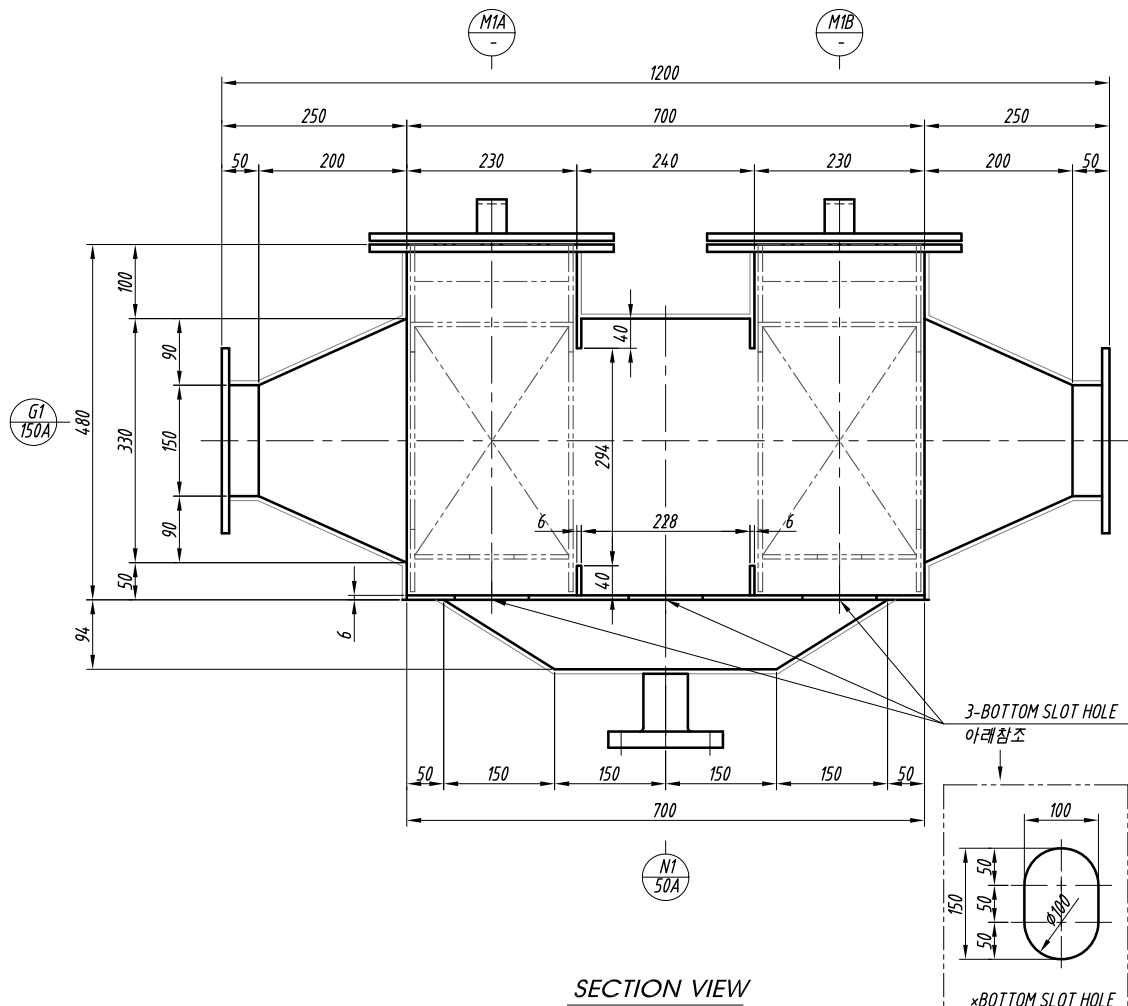
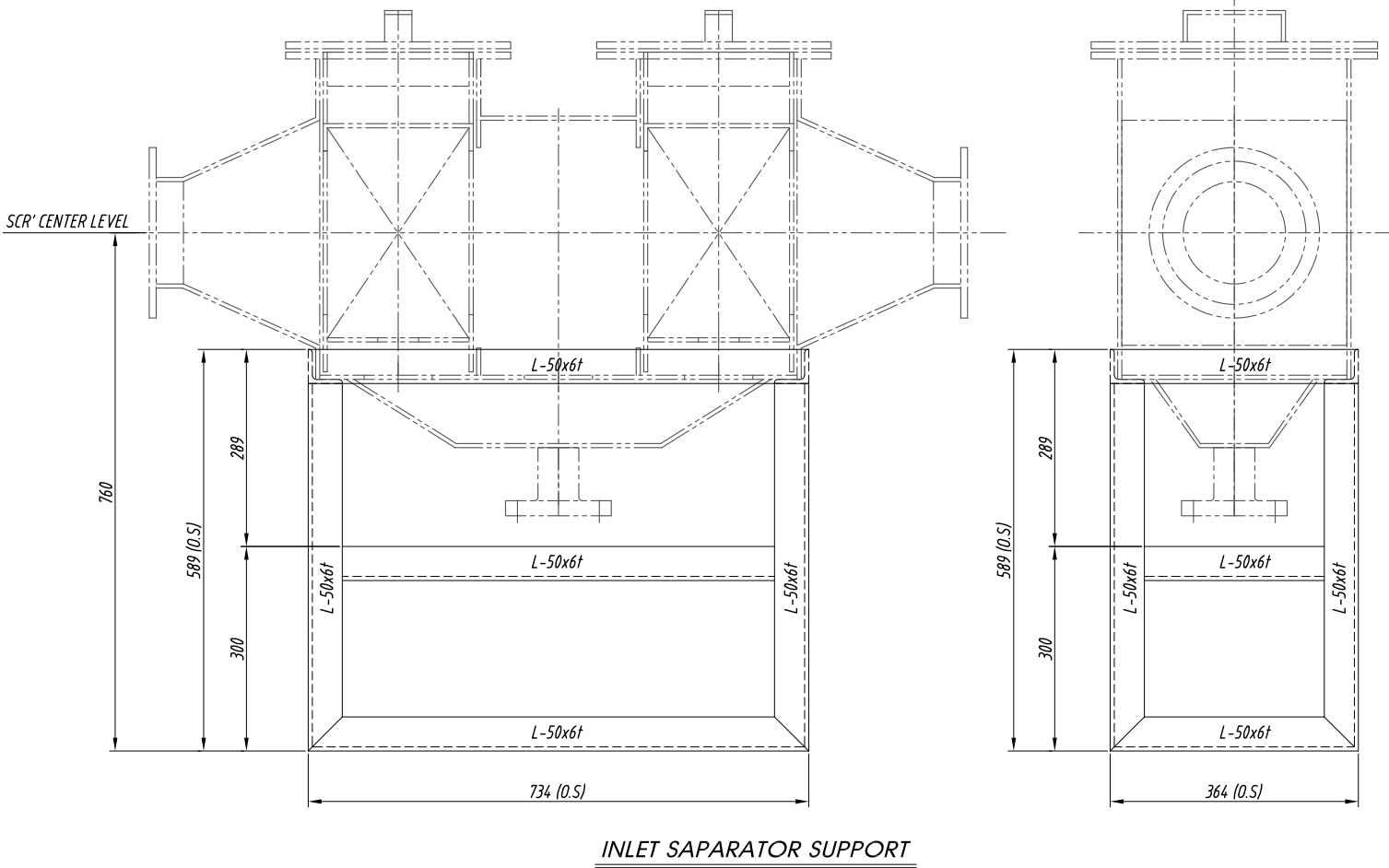
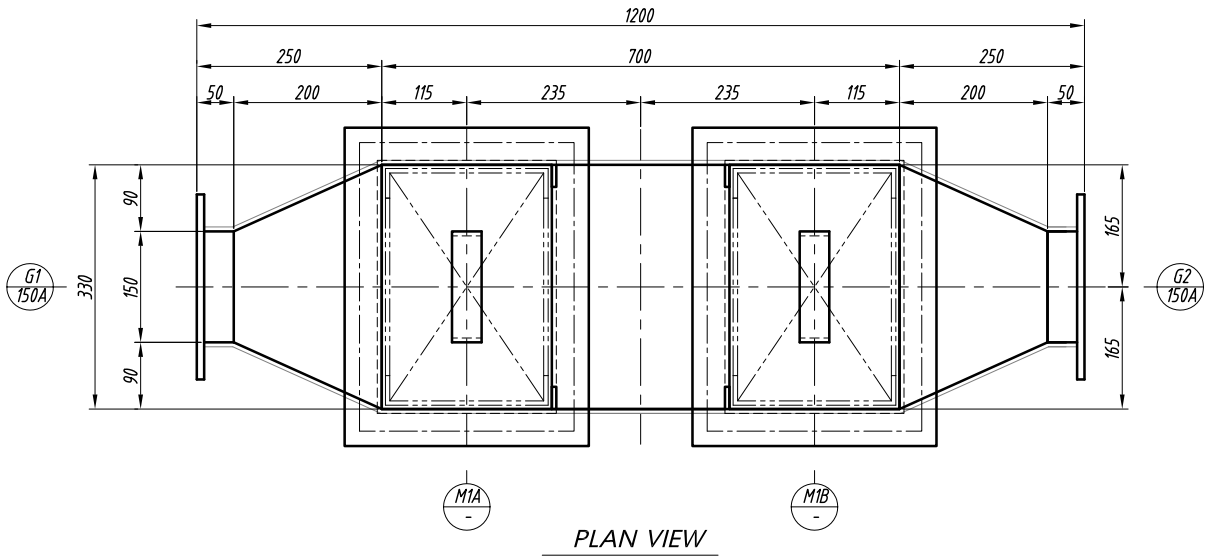
x. NOTE

	12.08.08		APPROVAL						
REV.	DATE		DESCRIPTION			DWN	CHK'D	APP'D	CLINT. APP'D

PROJECT :	DEHYDRATION SYSTEM
-----------	---------------------------

DRAWN BY S.H KIM		DATE 12.08.08		TITLE: LAY-OUT DRAWING FOR CONTACTOR TOWER (BUBBLE CAP TRAY)
CHECKED BY J.H CHOI		DATE 12.08.08		
APPROVED BY H.S GO		DATE 12.08.08		
SCALE		JOB NO.		
1/15		P12078		ITEM NO. -
				DRAWING NUMBER P12078-02-001
				REV. 

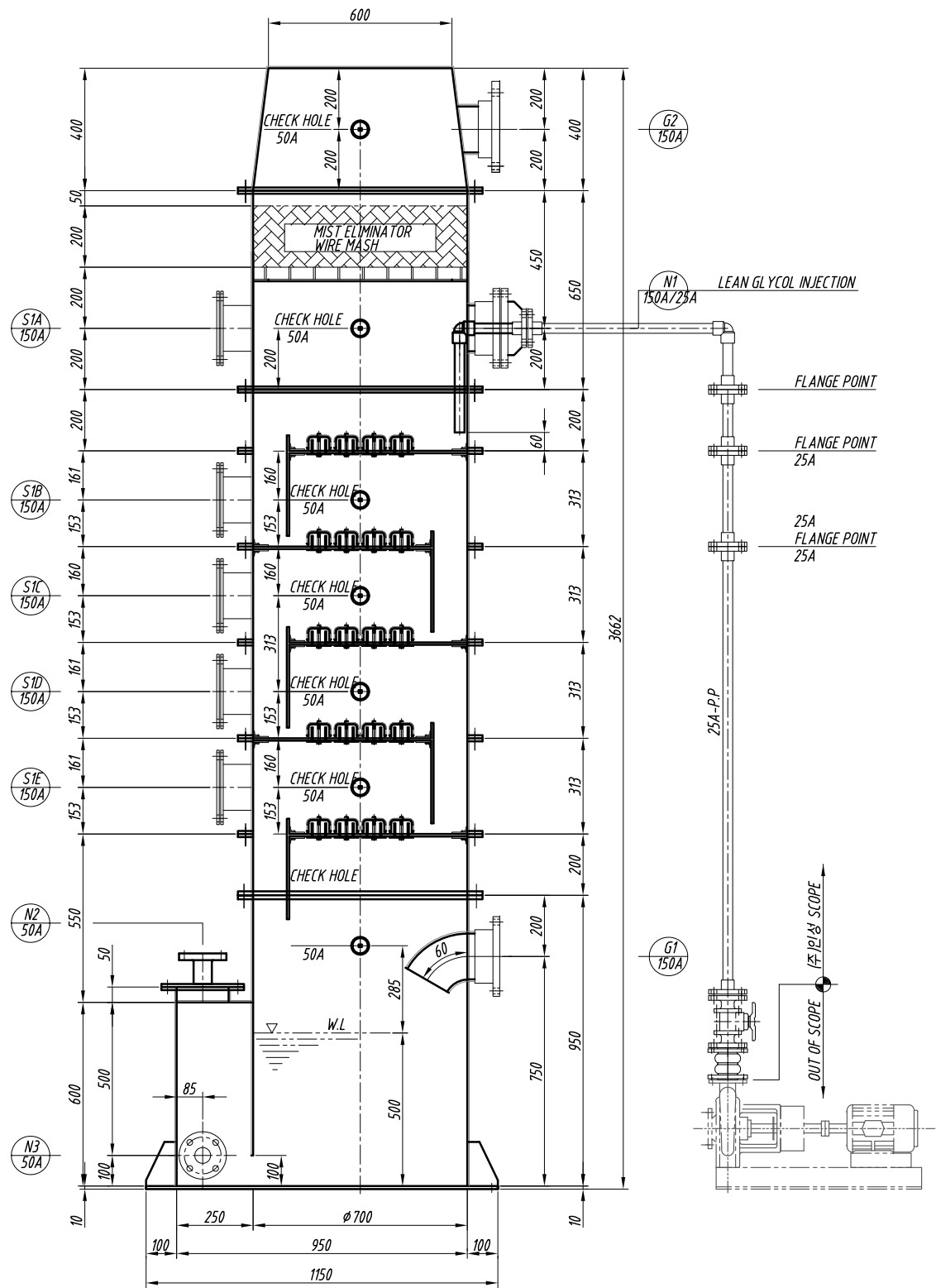
NOZZLE SCHEDULE						
MARK	SIZE	Q'TY	SERVICE	RATING	MAT'L	REMARK
G1	150A	1	GAS INLET	-	P.P	
G2	150A	1	GAS OUTLET	-	P.P	
M1A/B	330x230	2	MANHOLE	-	P.P	
N1	50A	1	DRAIN	KS 10K	P.P	BLIND F/G



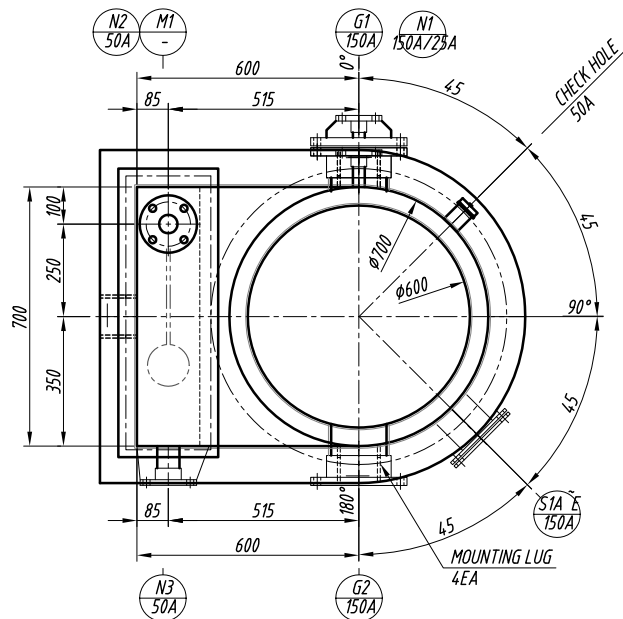
- ×. NOTE
1. BODY MAT'L : 투명 P.V.C
 2. THICKNESS :
1) SHELL & TOP : 6t
2) BOTTOM : 6t

REV.	DATE	DESCRIPTION	DWN	CHK'D	APP'D	CLNT APP'D
12.08.08		APPROVAL	S.H.K	J.H.C	H.S.G	
PROJECT :						
DEHYDRATION SYSTEM						
DRAWN BY	DATE	TITLE:				
S.H.KIM	12.08.08	ASSEMBLY DRAWING				
CHECKED BY	DATE					
J.H.CHOI	12.08.08	FOR				
APPROVED BY	DATE	INLET SEPARATOR				
H.S.GO	12.08.08					
SCALE	JOB NO.	ITEM NO.	DRAWING NUMBER	REV.		
1/5	P12078	-	P12078-03-003			

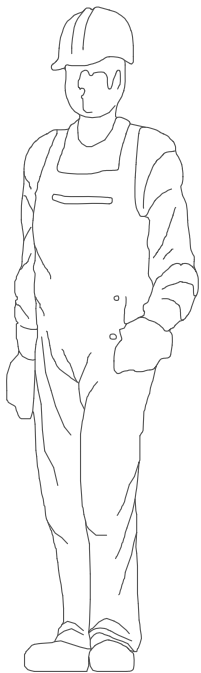
[TYPE #1]
BUBBLE CAP TRAY



ELEVATION VIEW



TOP VIEW



NOZZLE SCHEDULE

MARK	SIZE	Q'TY	SERVICE	RATING	MAT'L	REMARK
G1	150A	1	GAS INLET	-	P.P	
G2	150A	1	GAS OUTLET	-	P.P	
M1	700x170	1	MANHOLE	-	P.P	
S1A-E	150A	5	SIGHTGLASS	-	P.P+P.C	
N1	150A/25A	1	LIQ. INLET(DOUBLE)	KS 10K	P.P	
N2	50A	1	LIQ. INLET	KS 10K	P.P	EMERGENCY
N3	50A	1	LIQ. OUTLET	KS 10K	P.P	

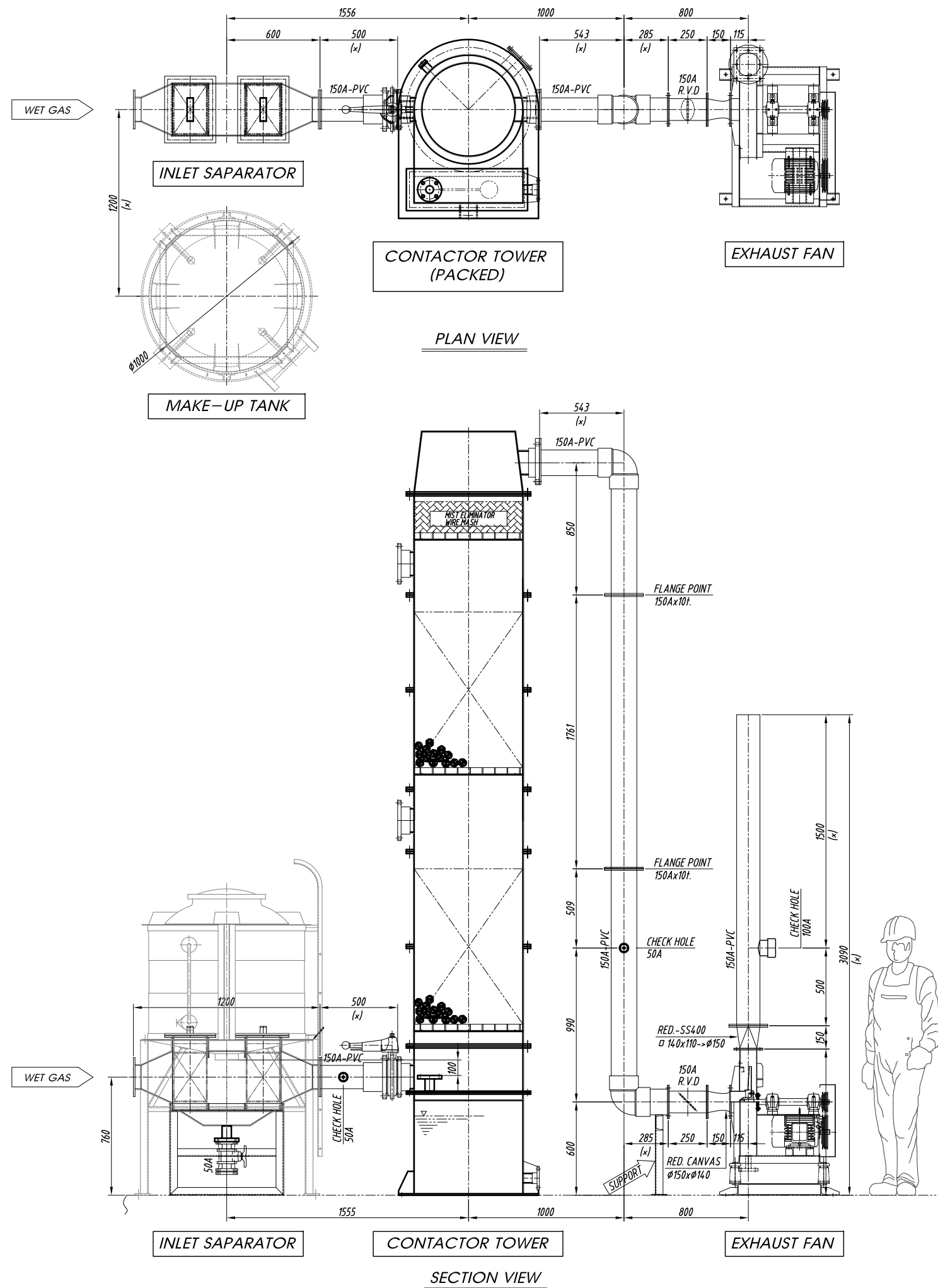
x. NOTE

1. BODY MAT'L : P.P
2. THICKNESS :
1) SHELL & TOP : 6t
2) BOTTOM : 10t

REV.	DATE	DESCRIPTION	DWN	CHK'D	APP'D	CLNT APP'D
12.08.08		APPROVAL	SHK	JHC	H.S.G	


PROJECT : DEHYDRATION SYSTEM					
DRAWN BY : S.W CHOI		DATE : 12.08.08		TITLE : ASSEMBLY DRAWING FOR CONTACTOR TOWER (BUBBLE CAP TRAY)	
CHECKED BY : J.W BAE		DATE : 12.08.08			
APPROVED BY : H.S GO		DATE : 12.08.08			
SCALE : 1/10	JOB NO. : P12078	ITEM NO. : -	DRAWING NUMBER : P12078-03-001	REV. : 0	


PACKED



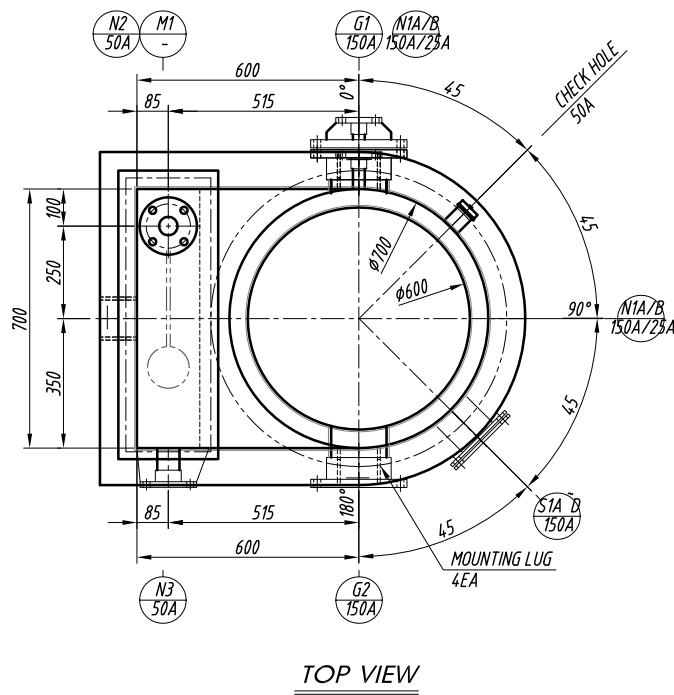
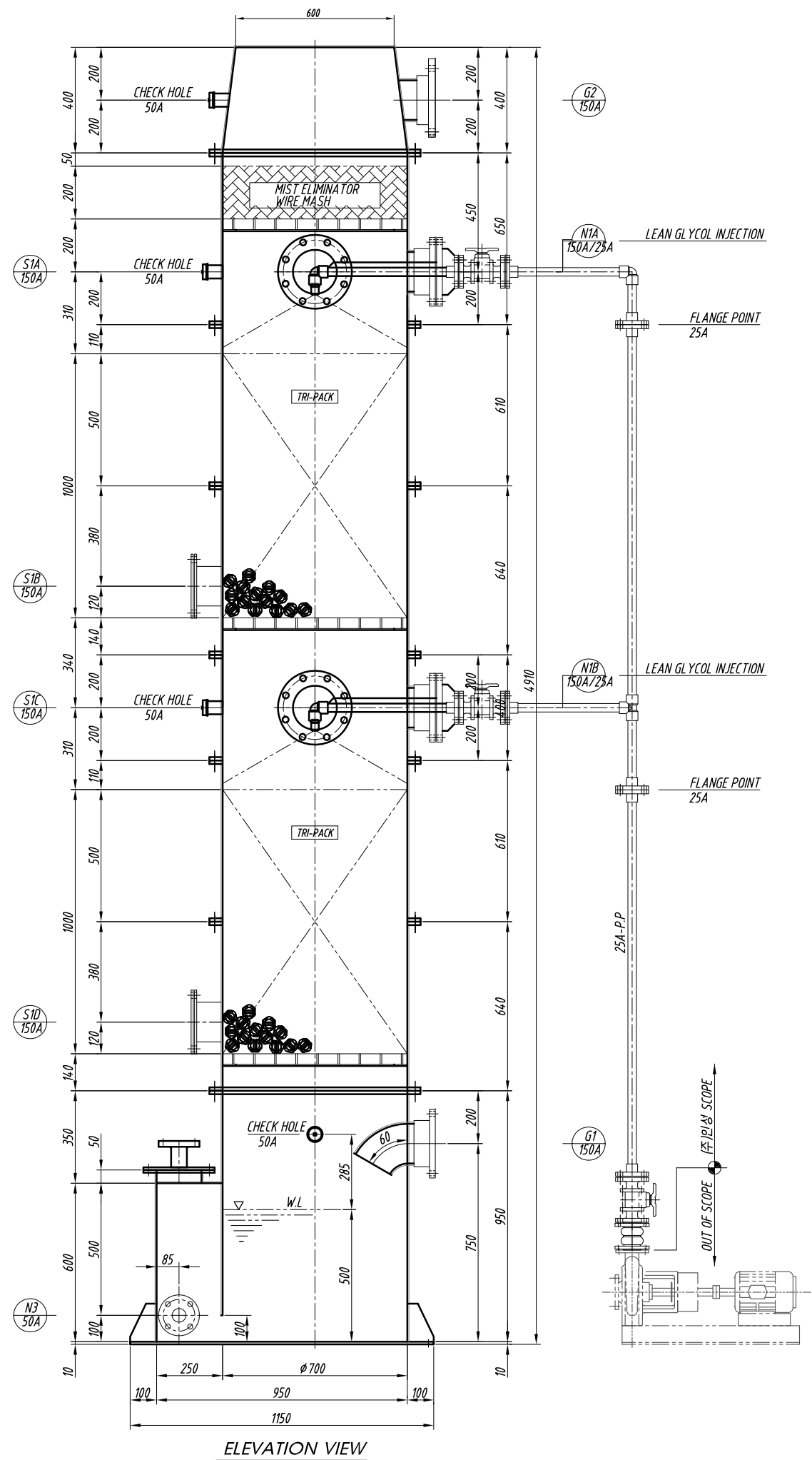
x. NOTE

1. (x): 현장맞춤 POINT

	12.08.08		APPROVAL						
REV.	DATE		DESCRIPTION			DWN	CHK'D	APP'D	CLINT. APP'D

PROJECT :					DEHYDRATION SYSTEM	
DRAWN BY S.H KIM		DATE 12.08.08		TITLE: LAY-OUT DRAWING FOR CONTACTOR TOWER (PACKED)		
CHECKED BY J.H CHOI		DATE 12.08.08				
APPROVED BY H.S GO		DATE 12.08.08				
SCALE 1/15		JOB NO. P12078		ITEM NO. -		DRAWING NUMBER P12078-02-002
						REV. 

[TYPE #2]
PACKED



NOZZLE SCHEDULE						
MARK	SIZE	Q'TY	SERVICE	RATING	MAT'L	REMARK
G1	150A	1	GAS INLET	-	P.P	
G2	150A	1	GAS OUTLET	-	P.P	
M1	700x170	1	MANHOLE	-	P.P	
S1A-D	150A	4	SIGHTGLASS	-	P.P+P.C	
N1A/B	150A/25A	2	LIQ. INLET(DOUBLE)	KS 10K	P.P	
N2	50A	1	LIQ. INLET	KS 10K	P.P	EMERGENCY
N3	50A	1	LIQ. OUTLET	KS 10K	P.P	

- x. NOTE
1. BODY MAT'L : P.P
 2. THICKNESS :
1) SHELL & TOP : 6t
2) BOTTOM : 10t

REV.	DATE	DESCRIPTION	DWN	CHK'D	APP'D	CLNT APP'D
1	12.08.08	APPROVAL	S.H.K	J.H.C	H.S.G	

PROJECT : DEHYDRATION SYSTEM					
DRAWN BY S.H KIM		DATE 12.08.08	TITLE: ASSEMBLY DRAWING FOR CONTACTOR TOWER (PACKED)		
CHECKED BY J.H CHOI		DATE 12.08.08			
APPROVED BY H.S GO		DATE 12.08.08			
SCALE	JOB NO.	ITEM NO.	DRAWING NUMBER		REV.
1/10	P12078	-	P12078-03-002		