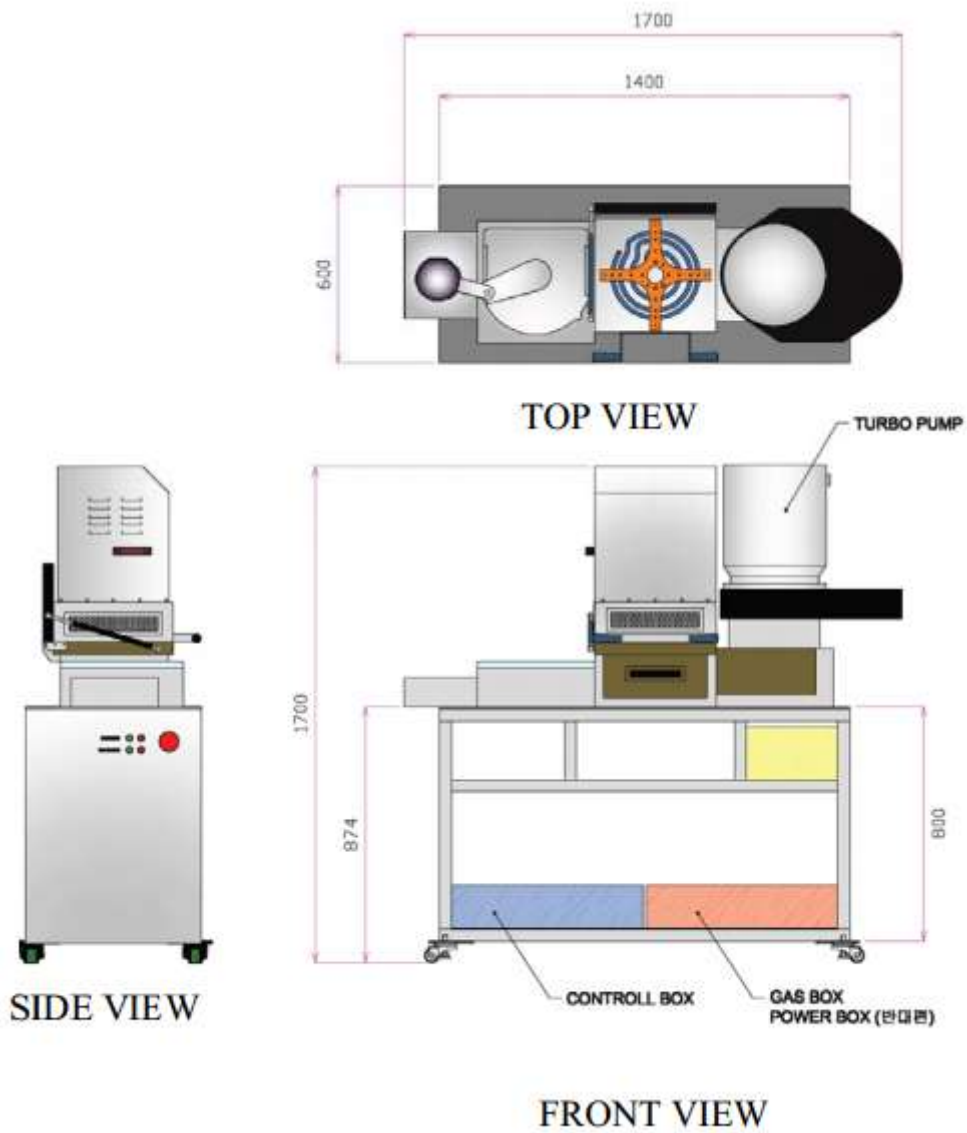


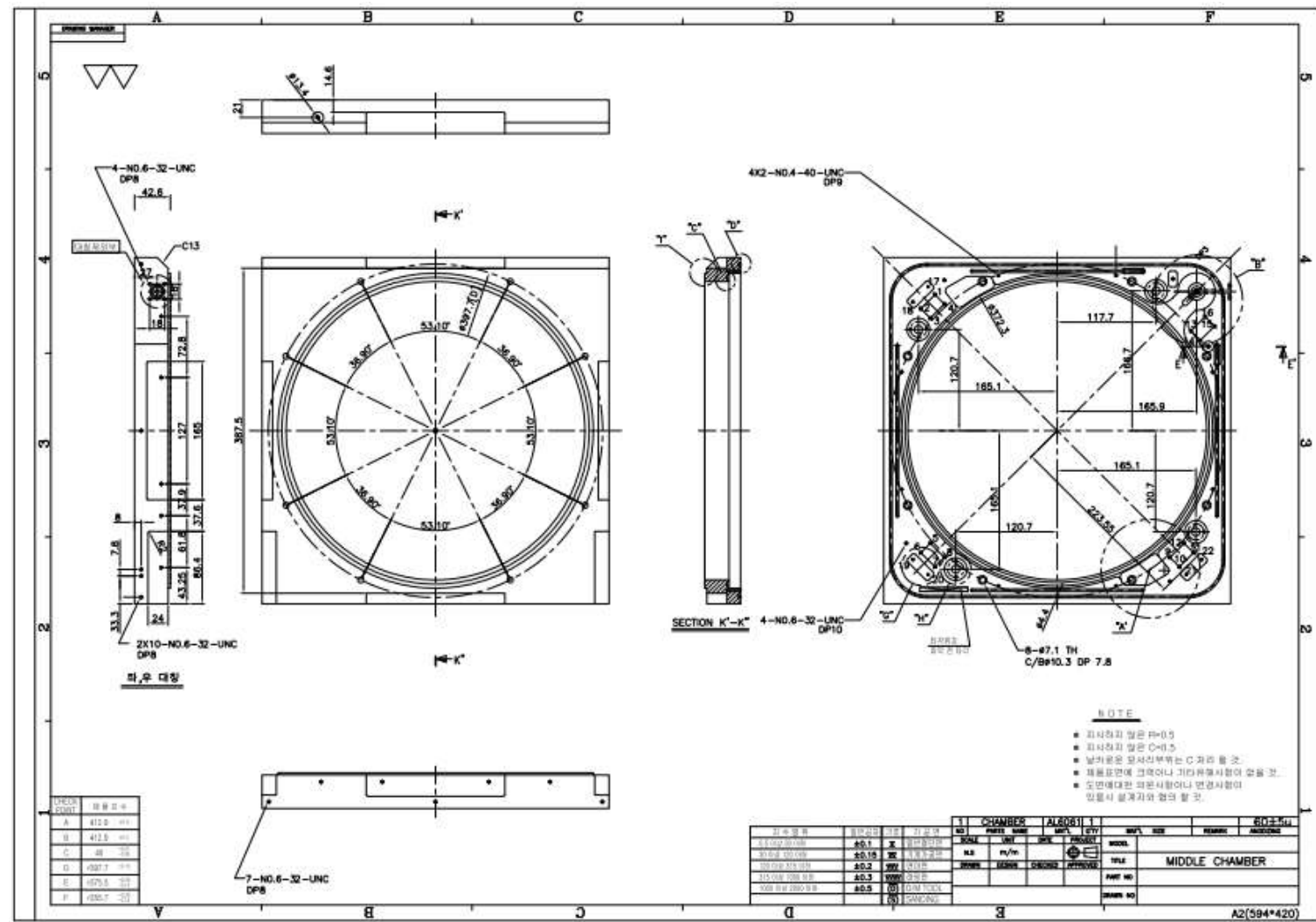
# 도면

품명 및 규격 / Description	단위 / Unit	수량 / Quantity
Dual Power 플라스마 점착제어시스템 제작	set	1

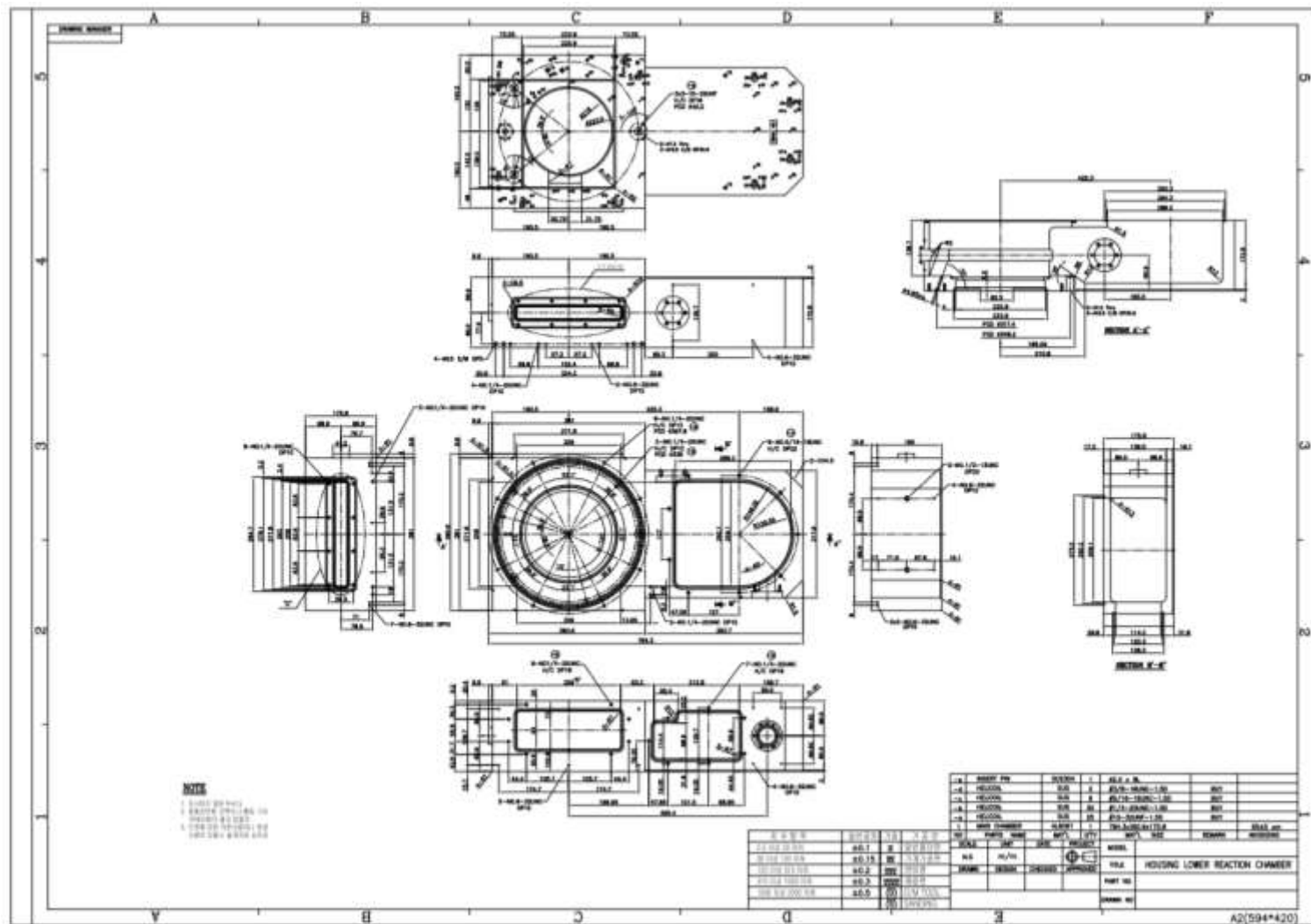
## 1. System Layout



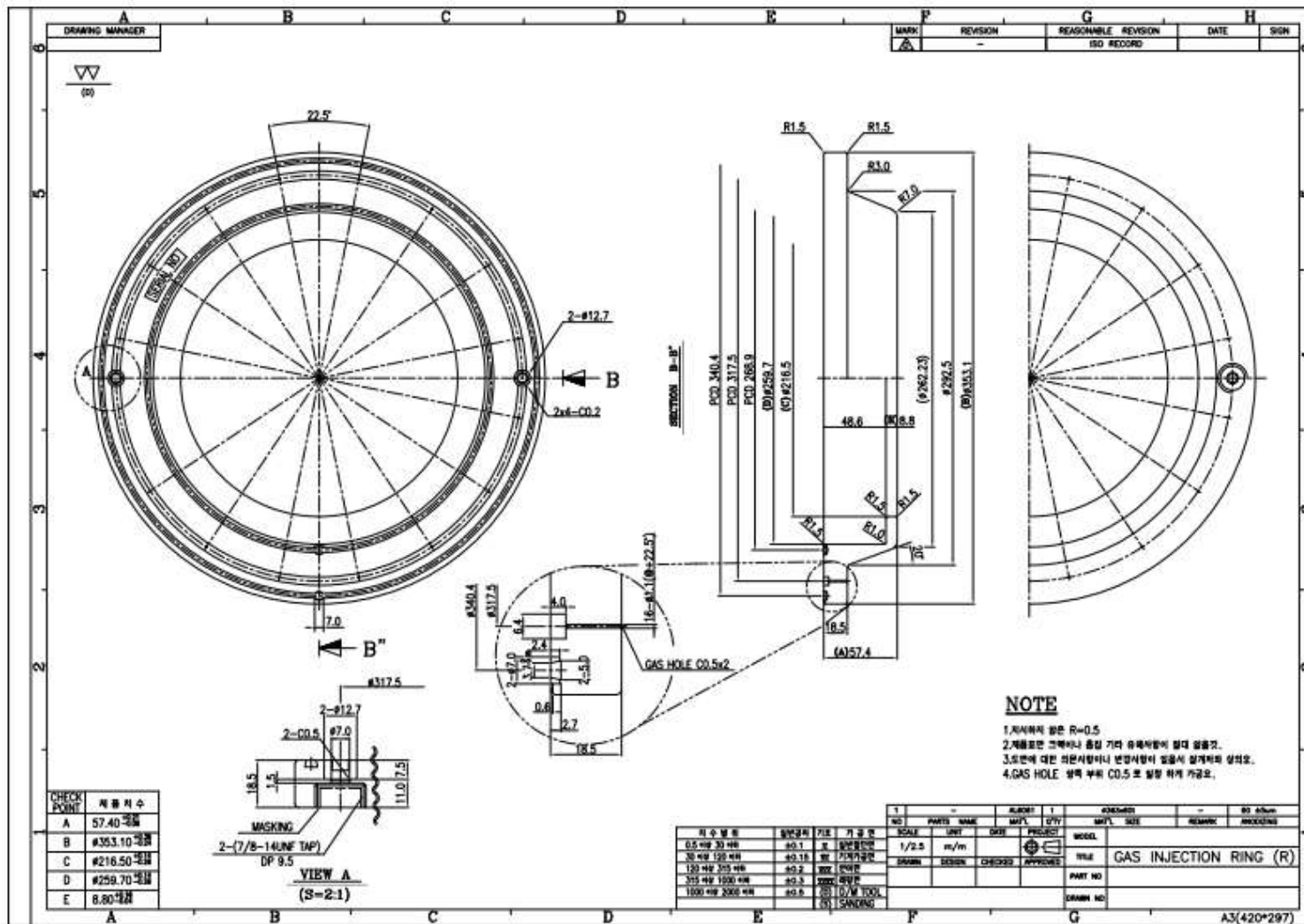
## 2. Middle Chamber



### 3. Housing Lower Reaction Chamber



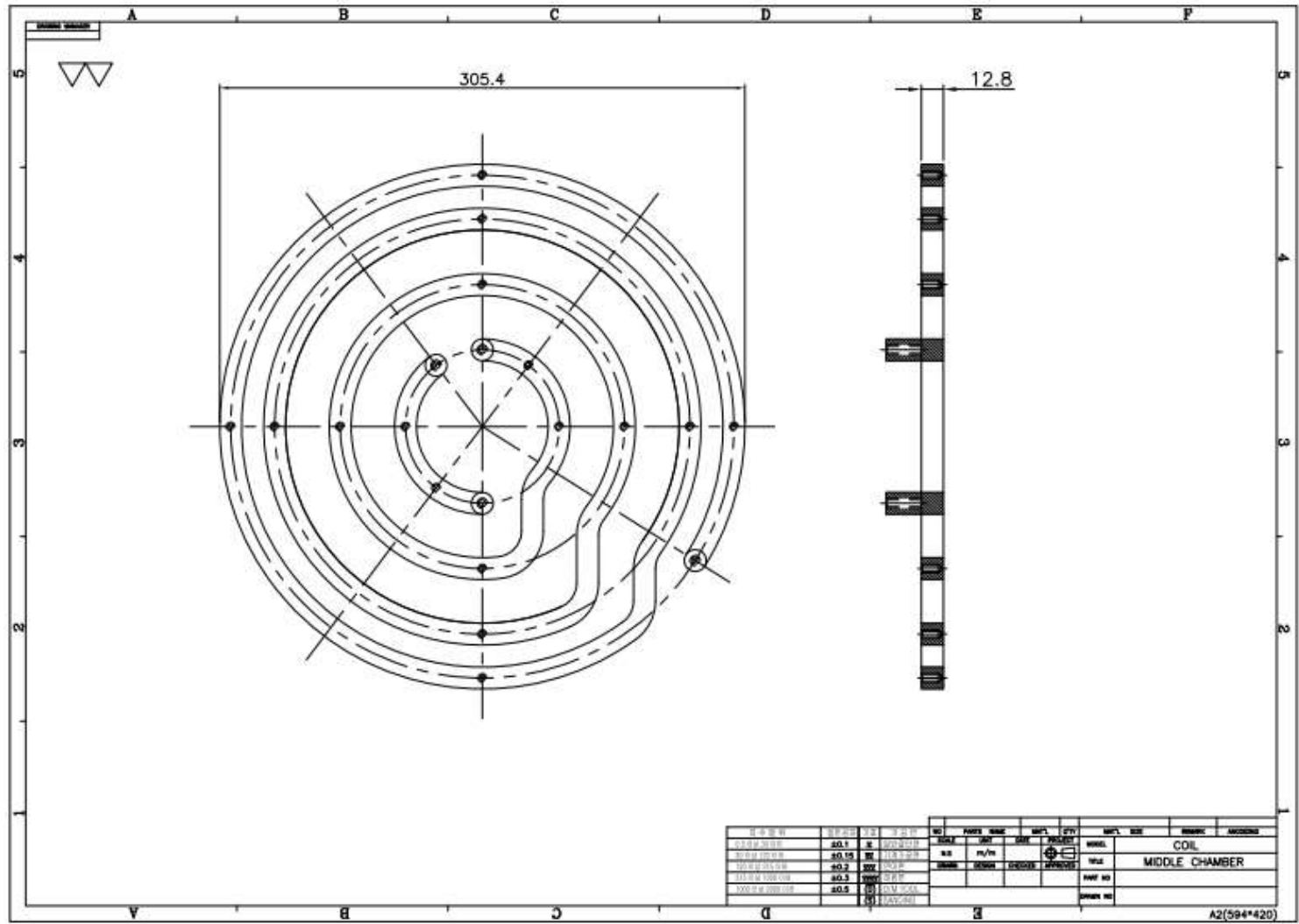
#### 4. Gas Injection Ring



Technical drawing of a 4-UFT PIN MIDDLE CHAMBER. The drawing includes a top view on the left showing a circular chamber with a central pin and four lifting points. A side view on the right shows the chamber's profile with a diameter of 40.7 and a height of 5.1. A table at the bottom right provides material specifications for the chamber and pin.

구분	재료	단면적	길이	중량	비고
1	40.7	100	100	100	4-UFT PIN
2	40.7	100	100	100	MIDDLE CHAMBER

6. Middle Chamber / Coil



7. Middle Chamber / Coil Supporter

