

제작 사양서

1.주요 사양

세부 구성	규격
CVD chamber 모듈	Process Chamber Laser Sensor Top door & view window / swing open
Power feedthrough 모듈	Power feedthrough/OFHC Slip ring / 250A
Loading & Unloading 챔버	ISO 100-NW25 Crosses Film seal rubber plate
Winding & unwinding 모듈	Rotation Zig
Pumping 모듈	Convectron gauge NW25

2. 세부 구성별 상세 사양

2.1 Chamber Module :

Process Chamber/ ϕ 250*360mm

- ISO100 Loading port
- ISO100 Unloading port
- CF2.75" Power Port
- CF2.75" Window Port
- CF2.75" Extra port

CF2.75" View window

Laser Sensor/CF2.75"

Top Door&View window/Swing open

Base Flange/ ϕ 300*20t

Door Hinge

2.2 Power Feedtgrough Modue

Power Feedthrough/OFHC

Rotary motion feedthrough

Slip ring/250A

Drum/OFHC, ϕ 50*100mm

2.3 Loading&Unloaing chamber

- ISO100-NW25 Crosses
- Film seal Rubber plate
- Blank cenering
- Quick Clamp

2.4 Unwinding unit

- Film Housing
- Support
- Rotation Zig
- Torque clutch

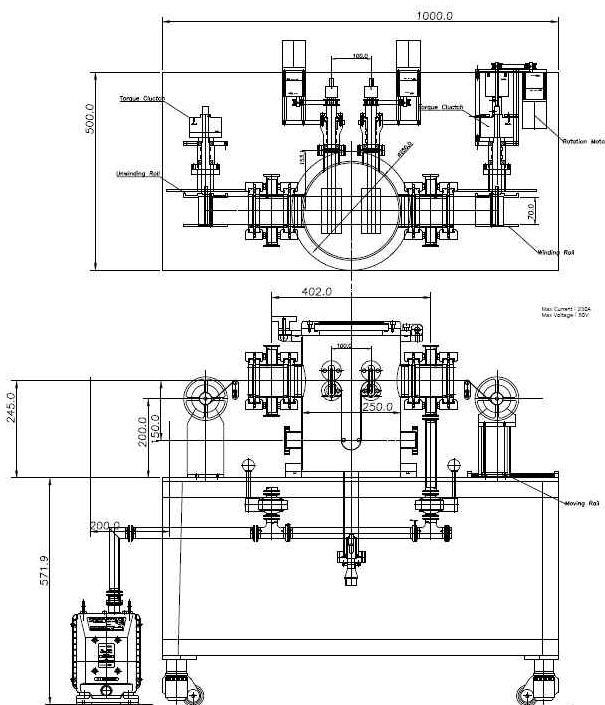
2.5 Winding unit

- Film Housing
- Support
- Rotation Zig

2.6 Pumping Module

- Butterfly valve NW40
- convectron gauge NW25/Edward
- Gauge controller 2ch/Edward
- Pumping line NW40,NW25

3. Roll to roll joule CVD 제작 도면



4. 기술 보유 requirement :

- 롤투롤 기반의 고성능 유연성의 나노박막 합성 장비 제조 기술 보유
-

5. 납기 및 보증

- 납기 : 발주 후 4주 이내
- 보증 : 설치 후 1년 이내
- 유틸리티 : AC220V, 3상, 공압 5 kgf/cm²